

MECHANICAL DETAILS FOR METAL NORTH AMERICAN J-BOX PACKAGE

Meso LED drivers are designed to generate one constant current output from an AC input, and work with most industry standard lighting controls in dimming applications. In case of installation on Junction Boxes, some extra parts may be required in order to meet the installation requirements.



North American Packaging for CFL Ballast replacement

CONDITIONS OF ACCEPTABILITY

When installed in the end use equipment, the following are among the considerations to be made:

These products are intended for building-in. Suitable Mechanical, Electrical and Fire Enclosure shall be provided that is in compliance with all the applicable requirements of the end product application.

The models with metal case may be provided with Plug Slots made in 5VA polymeric material. These parts serve to enclose the case's openings in correspondence of the input/output connectors, and have been evaluated for the Mechanical, Electrical and Fire enclosure functions.

The metal case of these units was found in compliance with the minimum thickness requirements for a metal enclosure. When additionally provided with polymeric Plug Slots, these units can be considered integrally provided of a suitable enclosure, if installed in compliance with the enclosure, mounting, spacing, casualty, and segregation requirements of the end product application.

AC Plug slot (RHMP363007-01) - Optionally provided for models Metal Case version – Polyamide 66 resin (PA66), R/C (QMFZ2), type Dupont, Zytel®, FR50. Rated 5VA, RTI imp 115°C, min thickness 1.5mm.
Snap fit to metal case.

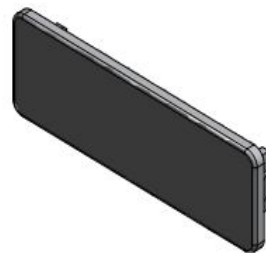
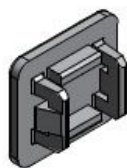
DC Plug slot (RHMP363008-01) - Optionally provided for models Metal Case version – Polyamide 66 resin (PA66), R/C (QMFZ2), type Dupont, Zytel®, FR50. Rated 5VA, RTI imp 115°C, min thickness 1.5mm.
Snap fit to metal case.

PARTS DESCRIPTION

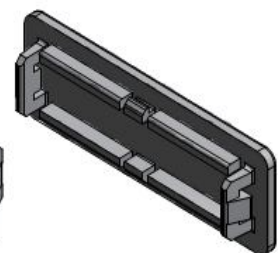
The AC Plug slot (RHMP363007-01) and the DC Plug slot (RHMP363008-01), showed in the following pictures, may be required in order to meet the Mechanical, Electrical and Fire enclosure functions when the unit is installed on a Junction Box.



RHPS363007-01



RHPS363008-01



MECHANICAL SPECIFICATION

The AC Plug slot (RHMP363007-01) and the DC Plug slot (RHMP363008-01) meet the following mechanical requirement:

Material: Polyamide 66 resin (PA), glass reinforced

Flame retardant UL94 5VA @ 1.5 mm

Relative thermal index (RTI) 115°C

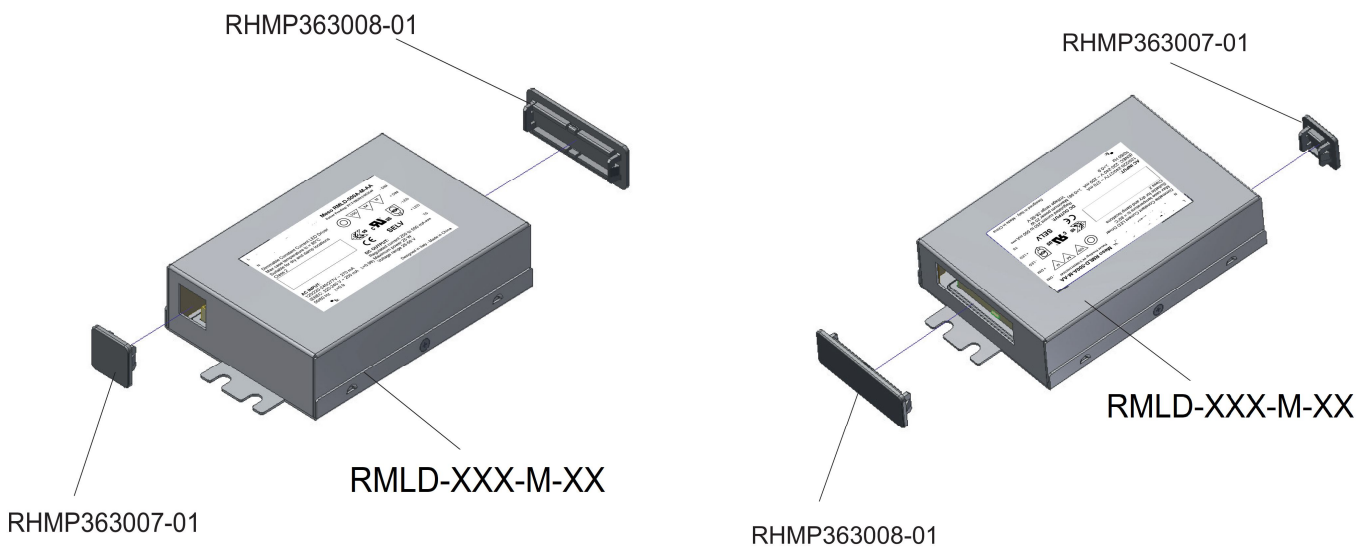
Color: Natural color (White) Dupon

Zytel® FR50 NC010 or equivalent Enedo approved and UL recognized (QMFZ2)

Meet the EU RoHS (Restriction of hazardous substances directive)

ASSEMBLY INSTRUCTION

The following drawing describe the assembly for the optional AC Plug slot (RHMP363007-01) and DC Plug slot (RHMP363008-01).



Specifications appearing in ENEDO's catalogues and brochures as well as any oral statements are not binding. All descriptions, drawings and other particulars (including dimensions, materials and performance data) given by ENEDO are as accurate as possible but, being given for general information, and are not binding on ENEDO. ENEDO makes thus no representation or warranty as to the accuracy of such material. We assume no liability other than as agreed in the terms of the individual contracts and we reserve the right to make technical modifications in the course of our product development. Our product information solely describes our goods and services and is in no way to be construed or interpreted as a quality or condition guarantee. The aforesaid shall not relieve the customer of its obligation to verify the suitability of our Products for the use or application intended by the purchaser. Customers are responsible for their products and applications. ENEDO assumes no liability from the use of its products outside of specifications. No license is granted to any intellectual property rights by this document.